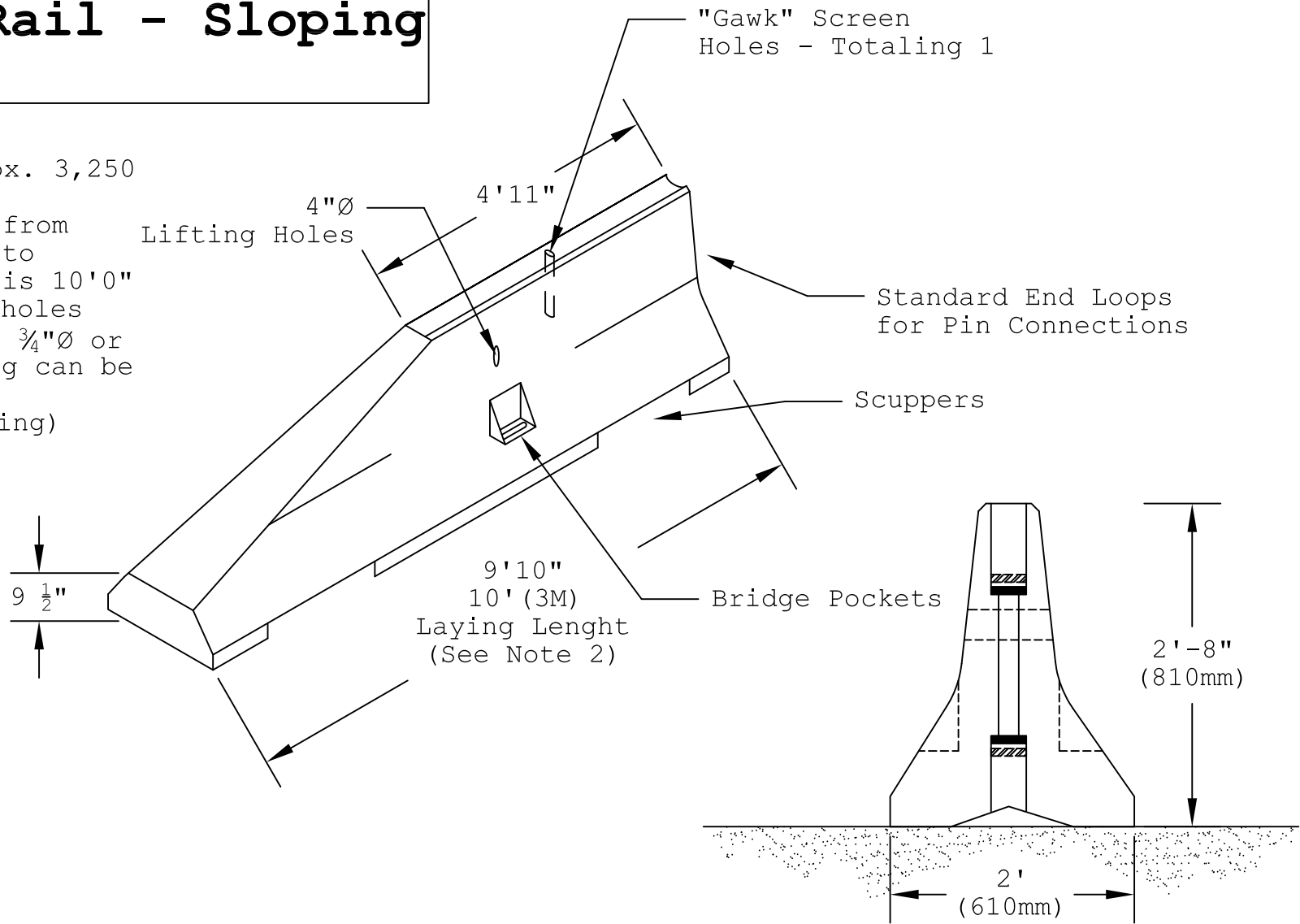


10' (3M) Terminal Barrier Rail - Sloping Type K

Notes:

- 1) Weight = Approx. 3,250 lbs per piece
- 2) Laying length from connector pin to connector pin is 10'0"
- 3) "Gawk" Screen holes available in 1 3/4"Ø or 3"Ø and spacing can be modified (Call for Pricing)



Barrier End Detail

Pro-Cast Products Inc.
P.O. Box 602
27417 E. 3rd St.
Highland, CA 92346
Phone: (909) 793-7602
Fax: (909) 793-1283
www.procastproducts.com

Created:	2/15/12	CWA
Modified:		
Modified:		
Modified:		
Modified:		
Modified:		

Terminal Barrier Rail
Type K - Sloping
10' Laying Length

