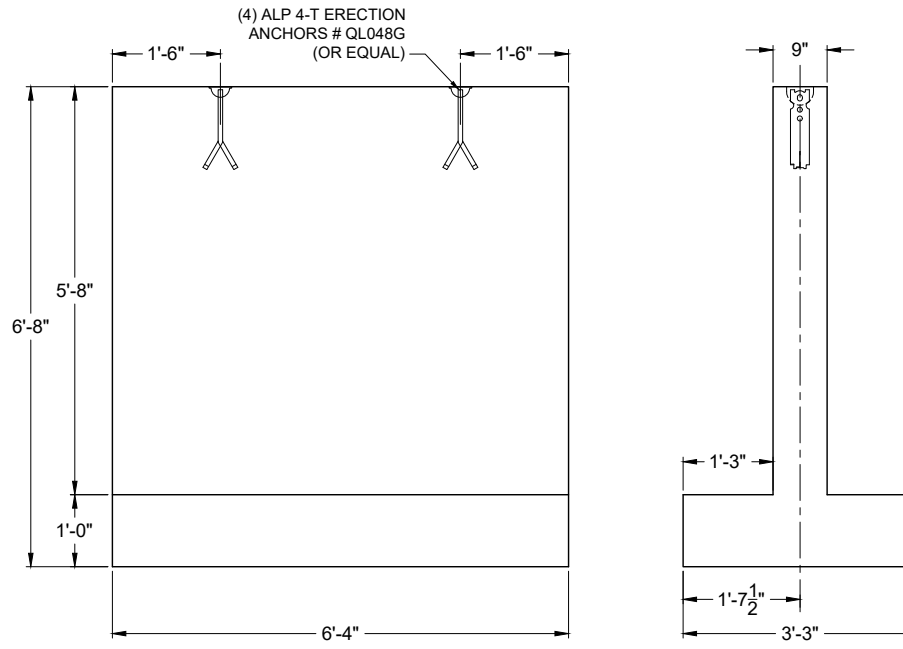


**ISOMETRIC VIEW**

DO NOT SCALE - APPROX. WT. = 7,125 LBS.



**TEXAS-T BARRIER DETAIL**

SCALE: 3/8" = 1'-0"

**Pro-Cast PRODUCTS INC.**  
 PO Box 602, Highland, CA 92346  
 909-793-7602 phone 909-793-1283 fax  
 www.procastproducts.com

PRODUCT NAME:  
**TEXAS-T BARRIER**

DESCRIPTION:

**DESIGN SPECIFICATIONS**

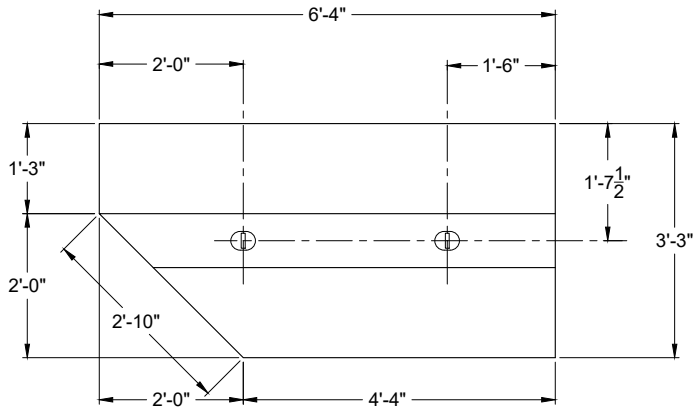
**STANDARD PLANS & SPECIFICATIONS**

PRO-CAST PRODUCTS RESERVES THE RIGHT TO MAKE CHANGES TO PRODUCT DESIGN AND/OR DIMENSIONS WITHOUT NOTICE. PLEASE CONTACT PRO-CAST PRODUCTS WHENEVER NECESSARY FOR CONFIRMATION OR ADVICE ON PRODUCT DESIGN.

**CONTENTS:**

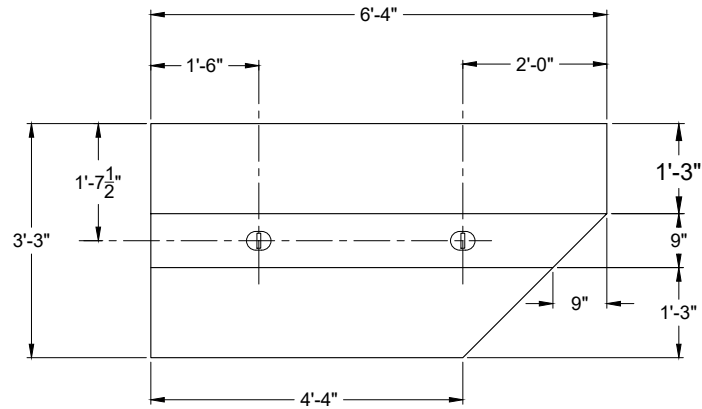
SCALE:	AS SHOWN
DRAWN BY:	TPC 1.26.2024
REVISED BY:	
CHECKED BY:	-- --

DRAWING NO. **TB**



**TB-L PLAN VIEW**

SCALE: 3/8" = 1'-0" APPROX. WT. = 6,585 LBS.

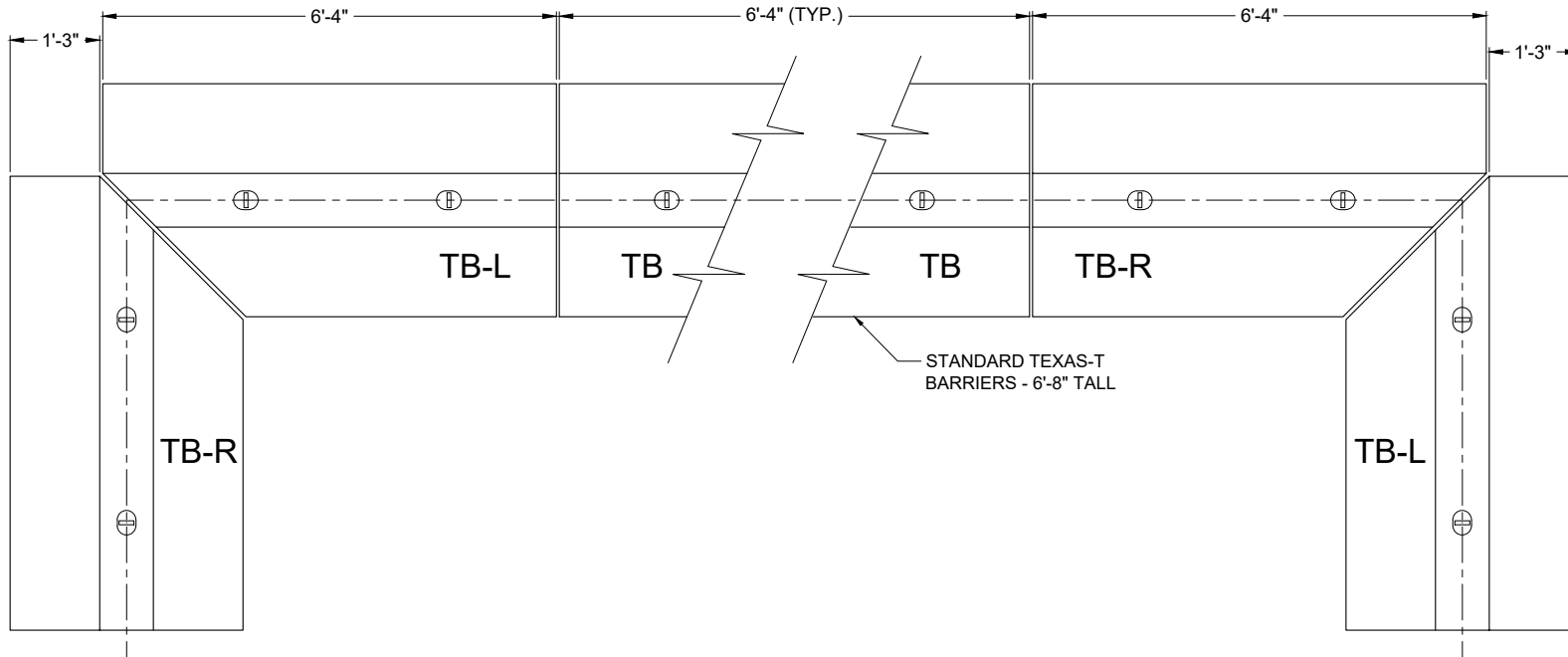


**TB-R PLAN VIEW**

SCALE: 3/8" = 1'-0" APPROX. WT. = 6,585 LBS.

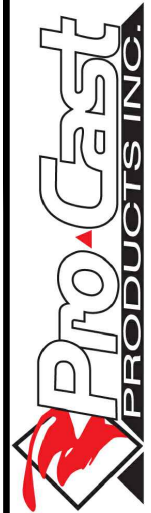
**TEXAS-T BARRIER - CORNER DETAILS**

SCALE: 1/4" = 1'-0"



**TYPICAL TEXAS-T BARRIER LAYOUT - PLAN VIEW**

SCALE: 3/8" - 1'-0"



PO Box 602, Highland, CA 92346  
 909-793-7602 phone 909-793-1283 fax  
 www.procastproducts.com

**PRODUCT NAME:**  
**TEXAS-T BARRIER**

**DESCRIPTION:**

**DESIGN SPECIFICATIONS**

**STANDARD PLANS  
 & SPECIFICATIONS**

PRO-CAST PRODUCTS RESERVES THE RIGHT TO MAKE CHANGES TO PRODUCT DESIGN AND/OR DIMENSIONS WITHOUT NOTICE. PLEASE CONTACT PRO-CAST PRODUCTS WHENEVER NECESSARY FOR CONFIRMATION OR ADVICE ON PRODUCT DESIGN.

**CONTENTS:**

<b>SCALE:</b>	AS SHOWN
<b>DRAWN BY:</b>	TPC 01.26.2024
<b>REVISED BY:</b>	
<b>CHECKED BY:</b>	-- --

**DRAWING NO.**

**TB LAYOUT**