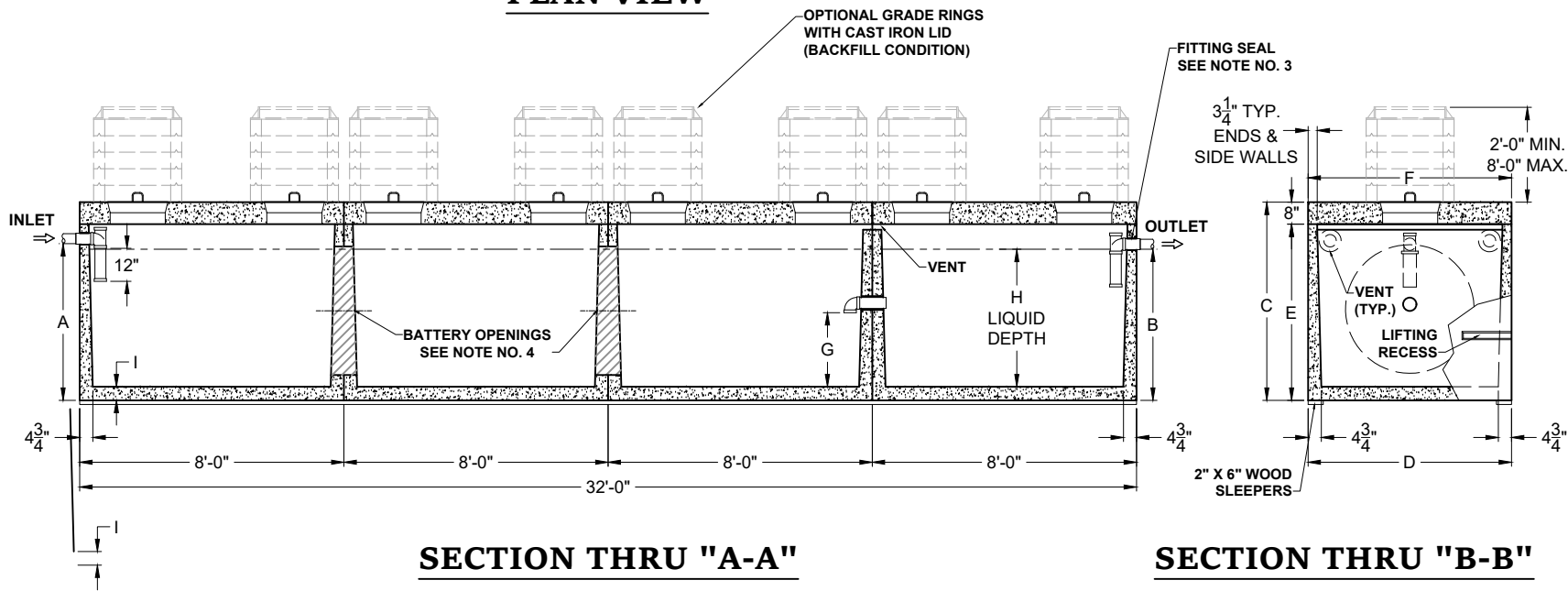


**PLAN VIEW**



PRODUCT NAME:  
**SEPTIC TANK**

DESCRIPTION:  
4000 THRU 6000 GALLONS  
WITH EIGHT MANHOLES/RISERS

DESIGN SPECIFICATIONS  
DESIGN LOAD: H2O LOADING

WITH DRY SOIL CONDITIONS (WATER LEVEL BELOW TANK). SUITABLE SUB-BASE BEDDED WITH GRANULAR MATERIAL SHALL BE PREPARED TO HANDLE ANTICIPATED LOADS. FOR COMPLETE DESIGN AND PRODUCT INFORMATION, PLEASE CONTACT PRO-CAST PRODUCTS.

PRO-CAST PRODUCTS RESERVES THE RIGHT TO MAKE CHANGES TO PRODUCT DESIGN AND/OR DIMENSIONS WITHOUT NOTICE. PLEASE CONTACT PRO-CAST PRODUCTS WHENEVER NECESSARY FOR CONFIRMATION OR ADVICE ON PRODUCT DESIGN.

- NOTES:
1. REFER TO SPECIFICATION SHEET NO. S-201
  2. REFER TO SPECIFICATION SHEET NOS. S-251 & S-252
  3. REFER TO SPECIFICATION SHEET NO. S-249
  4. REFER TO SPECIFICATION SHEET NO. S-101.

SCALE: 3/16" = 1'-0"  
DRAWN BY: TPC/09/14/2017  
REVISED BY: TPC/12/29/2023  
CHECKED BY:

DRAWING NO. **S-011**

ALL DIMENSIONS ARE IN INCHES & WEIGHTS IN LBS - (RISER WT. NOT INCLUDED)										EXCAVATION SPECIFICATIONS				
MODEL	A	B	C	D	E	F	G	H	I	WEIGHT	LENGTH	WIDTH	BELOW INLET	TANK HEIGHT
4000 / S-HD-4-4000	50	48	63	74	55	74	20 3/4	41 1/2	4 1/2	58,040	35'-0"	9'-2"	4'-0"	5'-3"
5000 / S-HD-4-5000	59	57	72	74	64	74	25 1/4	50 1/2	4 1/2	62,900	35'-0"	9'-2"	4'-9"	6'-0"
PC S-6000 / S-HD-4-6000	62 1/2	60 1/2	75 1/2	85	67 1/2	85	26 3/4	53 1/2	5	73,380	35'-0"	10'-1"	5'-0 1/2"	6'-3 1/2"