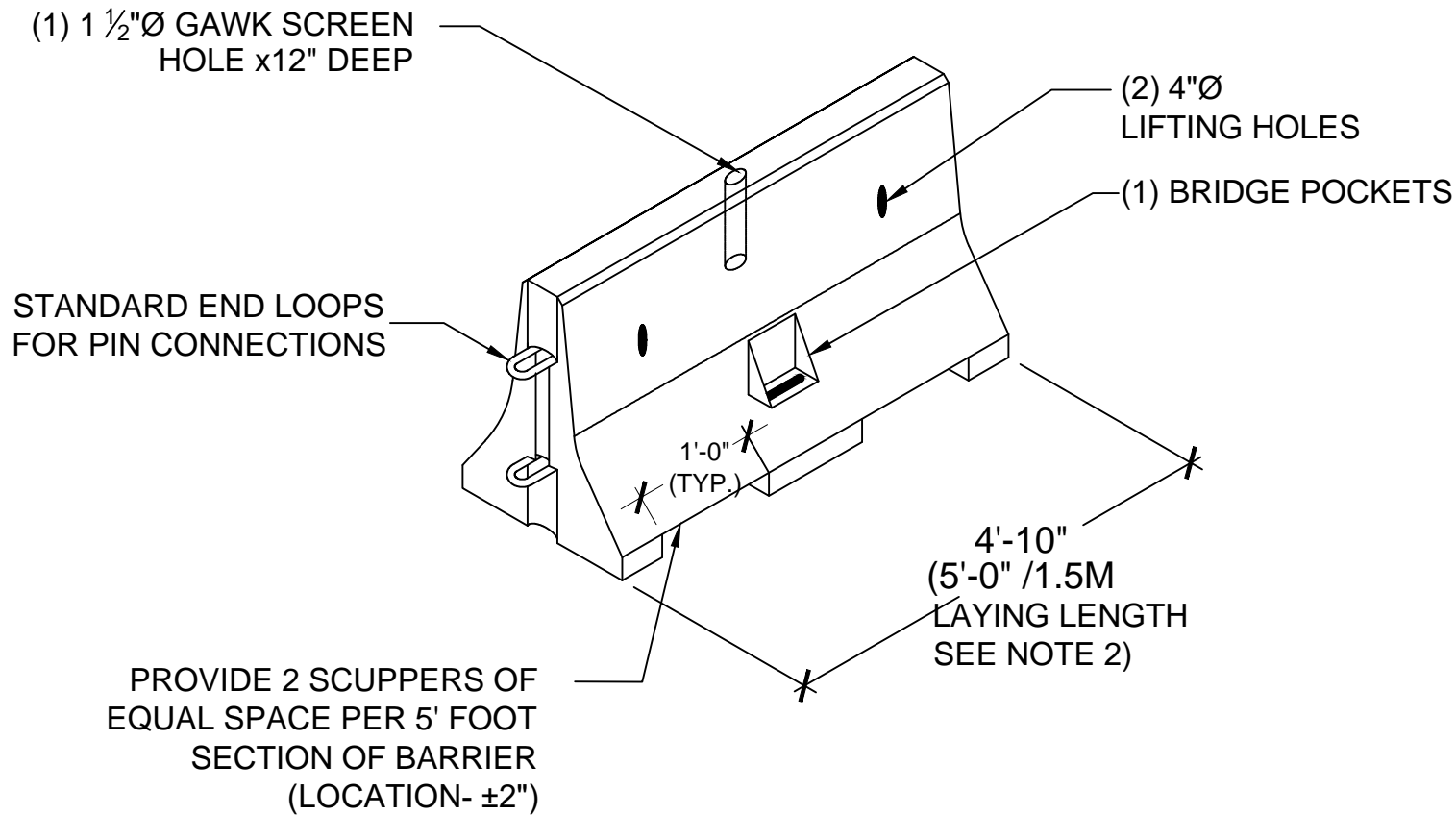


NOTES:

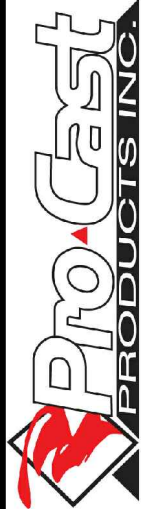
1. Weight = Approx. 1,950 lbs per piece.
2. Laying length between connector pins is 5'-0".
3. "GAWK" screen hole is 1 1/2"Ø x12" deep or 3"Ø consult factory when placing order.
4. Cured in accordance with 2010 Caltrans Standard Specifications Section 90-1.03B



ISOMETRIC

SCALE: 1/2"=1'-0"

Barrier Type K-5



PO Box 602, Highland, CA 92346
 909-793-7602 phone 909-793-1283 fax
 www.procastproducts.com

PRODUCT NAME:
K-5

DESCRIPTION:
TYPE K-5

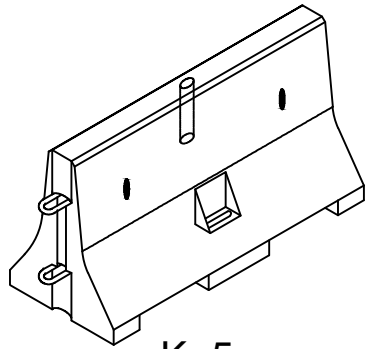
DESIGN SPECIFICATIONS

PRO-CAST PRODUCTS RESERVES THE RIGHT TO MAKE CHANGES TO PRODUCT DESIGN AND/OR DIMENSIONS WITHOUT NOTICE. PLEASE CONTACT PRO-CAST PRODUCTS WHENEVER NECESSARY FOR CONFIRMATION OR ADVICE ON PRODUCT DESIGN.

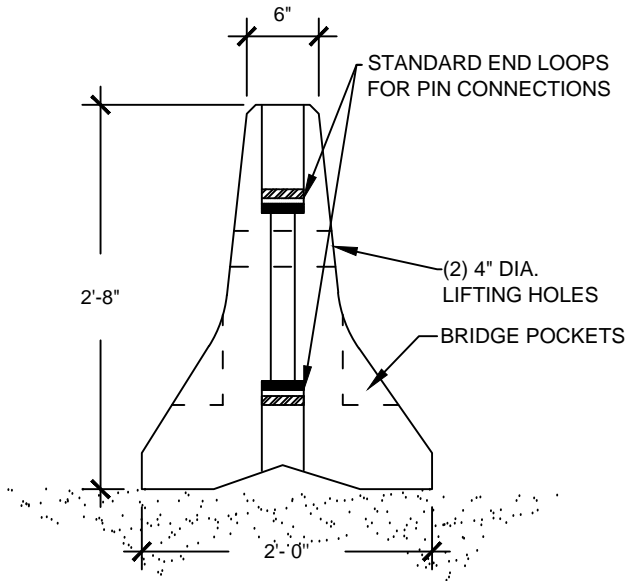
CONTENTS:
ISOMETRIC

| | |
|-------------|-----------------|
| SCALE: | 1/2"=1'-0" |
| DRAWN BY: | F.M. 12/06/2017 |
| REVISED BY: | |
| CHECKED BY: | ** ** |

DRAWING NO.
B-003A

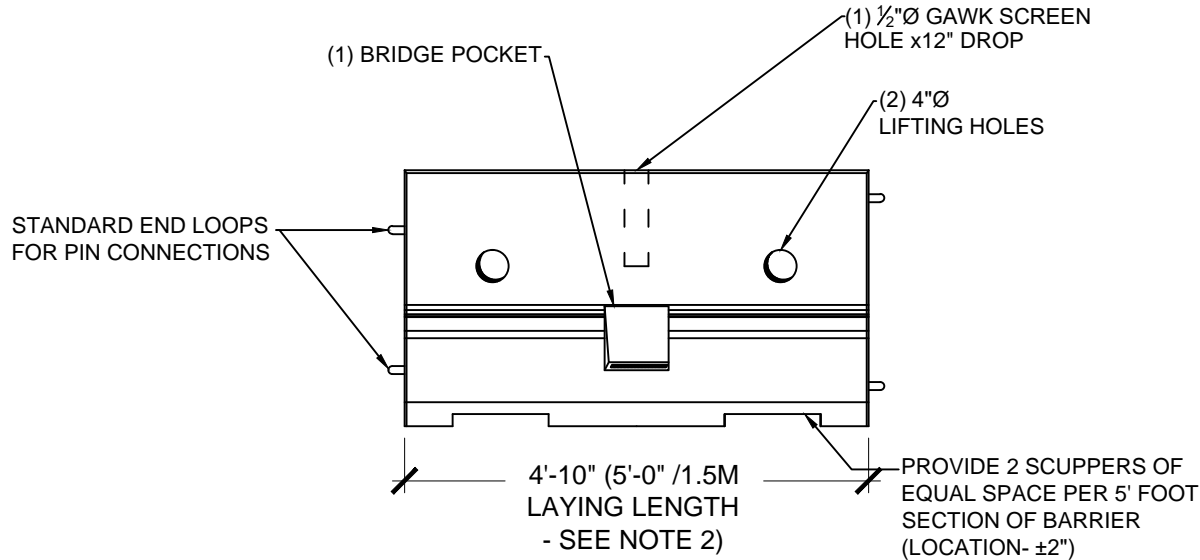


K-5



BARRIER END DETAIL

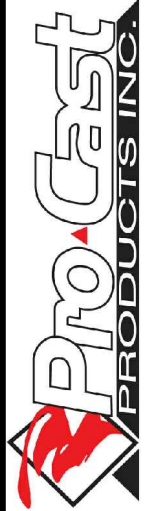
SCALE: 3/4"=1'-0"



ELEVATION

SCALE: 1/2"=1'-0"

Barrier Type K-5



PO Box 602, Highland, CA 92346
909-793-7602 phone 909-793-1283 fax
www.procastproducts.com

PRODUCT NAME:

K-5

DESCRIPTION:

TYPE K-5

DESIGN SPECIFICATIONS

PRO-CAST PRODUCTS RESERVES THE RIGHT TO MAKE CHANGES TO PRODUCT DESIGN AND/OR DIMENSIONS WITHOUT NOTICE. PLEASE CONTACT PRO-CAST PRODUCTS WHENEVER NECESSARY FOR CONFIRMATION OR ADVICE ON PRODUCT DESIGN.

CONTENTS:

- END DETAIL
- SIDE ELEVATION

| | |
|-------------|-----------------|
| SCALE: | |
| DRAWN BY: | F.M. 12/06/2017 |
| REVISED BY: | |
| CHECKED BY: | ** ** |

DRAWING NO.
B-003B