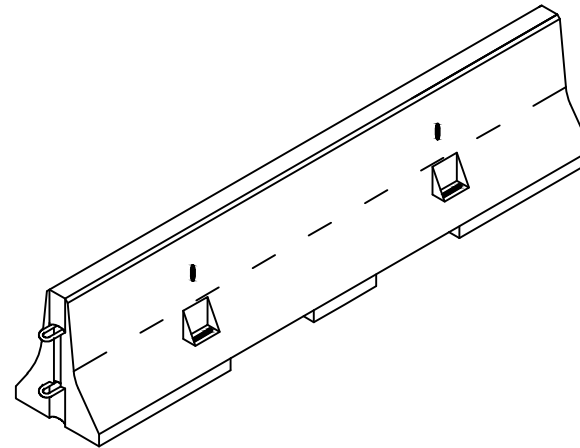


END DETAIL

SCALE: 1/2"=1'-0"

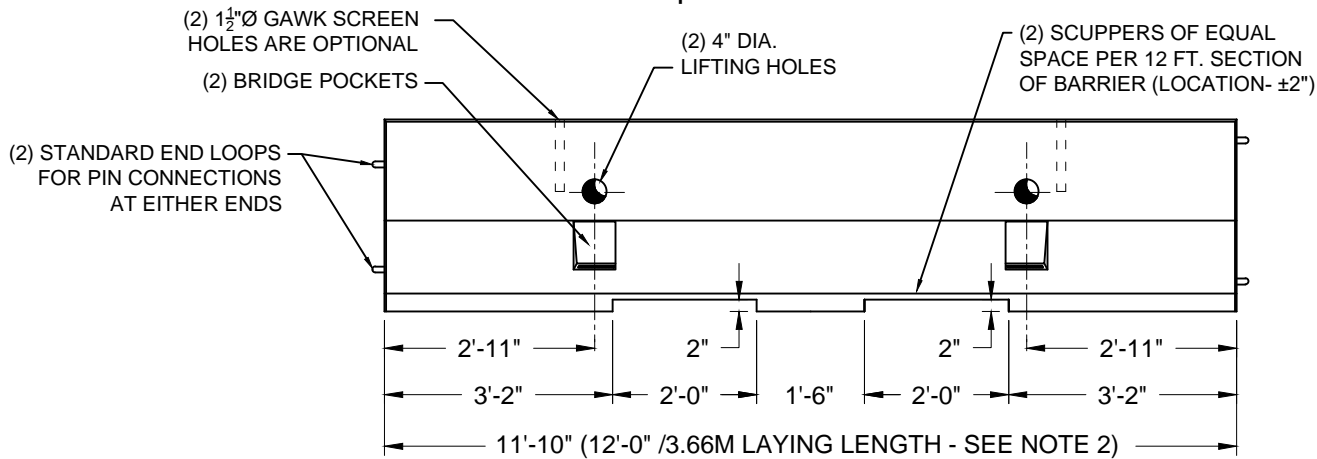


ISOMETRIC VIEW

SCALE: 1/4"=1'-0"

NOTES:

1. Weight = Approx. 4,680 lbs per piece.
2. Laying length between connector pins is 12'-0".
3. Optional "Gawk" screen holes are 1 1/2"Ø x 12" deep.
4. Cured in accordance with 2010 Caltrans Standard Specifications Section 90 -1.03B



FRONT ELEVATION

SCALE: 3/8"=1'-0"

Jersey Barrier J-12

Pro-Cast PRODUCTS INC.
 PO Box 602, Highland, CA 92346
 909-793-7602 phone 909-793-1283 fax
 www.procastproducts.com

PRODUCT NAME:
J-12

DESCRIPTION:
**JERSEY BARRIER
12 FT.**

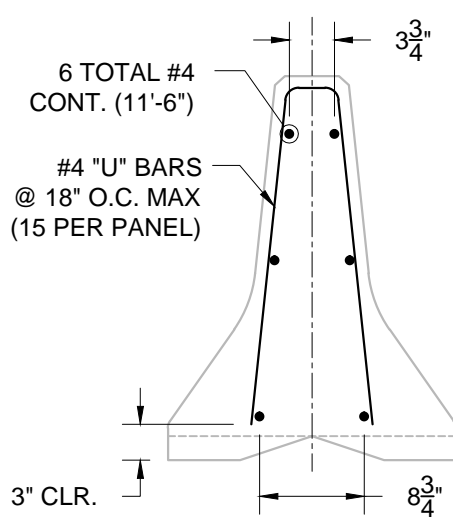
DESIGN SPECIFICATIONS

**STANDARD PLANS
& SPECIFICATIONS**

PRO-CAST PRODUCTS RESERVES THE RIGHT TO MAKE CHANGES TO PRODUCT DESIGN AND/OR DIMENSIONS WITHOUT NOTICE. PLEASE CONTACT PRO-CAST PRODUCTS WHENEVER NECESSARY FOR CONFIRMATION OR ADVICE ON PRODUCT DESIGN.

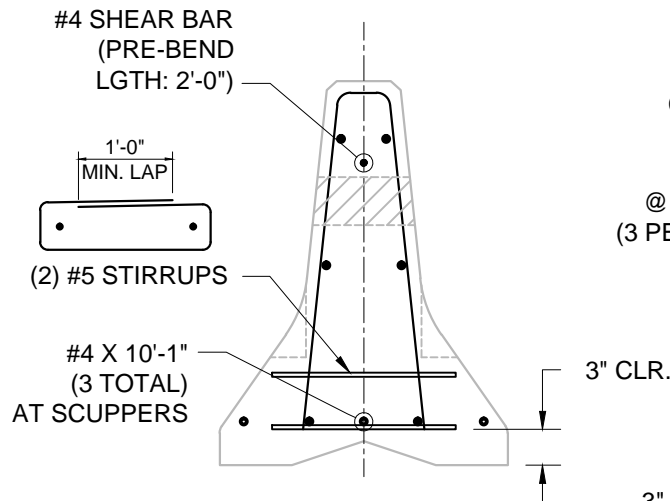
CONTENTS:
 - END DETAIL
 - FRONT ELEVATION
 - ISOMETRIC VIEW

SCALE:
 DRAWN BY: TPC 01/31/2018
 REVISED BY:
 CHECKED BY: ** **
 DRAWING NO.
B-017A



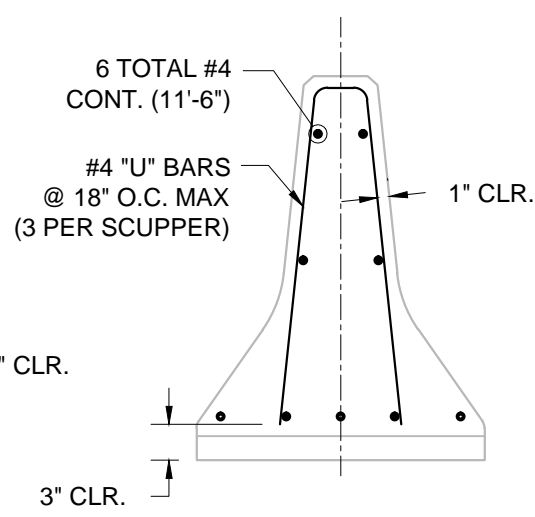
SECTION A-A

SCALE: 3/4" = 1'-0"



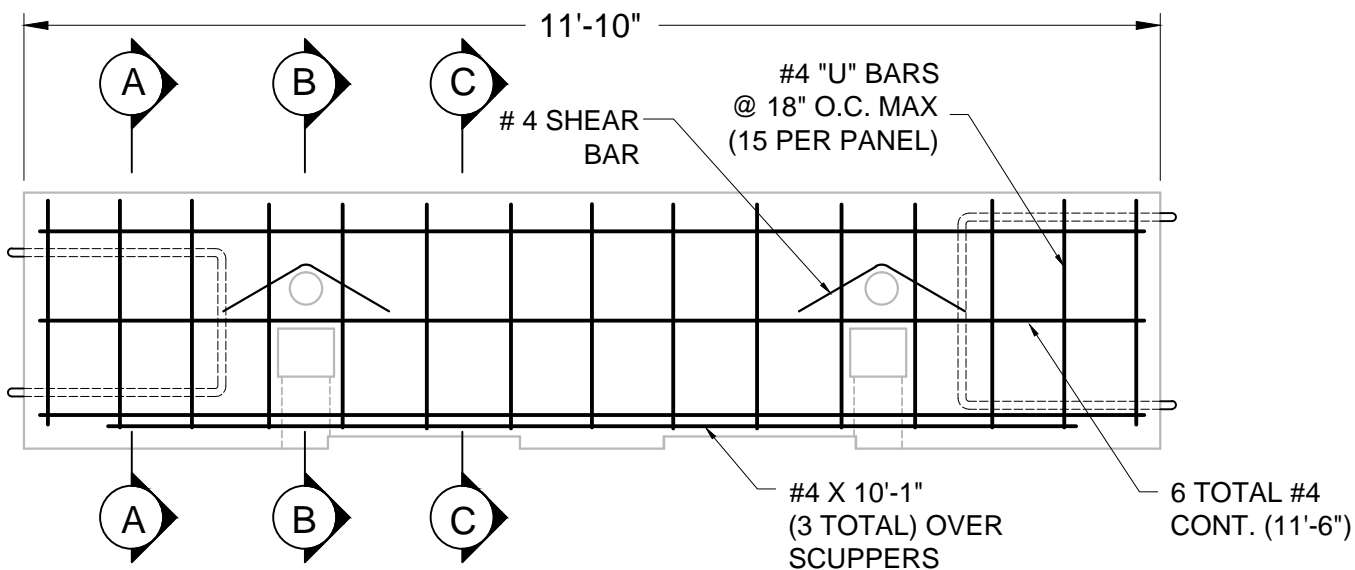
SECTION B-B

SCALE: 3/4" = 1'-0"



SECTION C-C

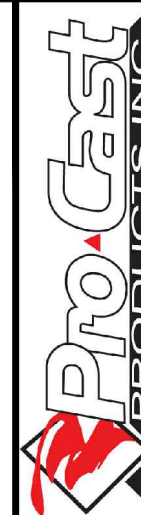
SCALE: 3/4" = 1'-0"



FRONT ELEVATION

SCALE: 1/2" = 1'-0"

Jersey Barrier J-12



PO Box 602, Highland, CA 92346
 909-793-7602 phone 909-793-1283 fax
 www.procastproducts.com

PRODUCT NAME:
J-12

DESCRIPTION:
JERSEY BARRIER
12 FT.

DESIGN SPECIFICATIONS

STANDARD PLANS
& SPECIFICATIONS

PRO-CAST PRODUCTS RESERVES THE RIGHT TO MAKE CHANGES TO PRODUCT DESIGN AND/OR DIMENSIONS WITHOUT NOTICE. PLEASE CONTACT PRO-CAST PRODUCTS WHENEVER NECESSARY FOR CONFIRMATION OR ADVICE ON PRODUCT DESIGN.

CONTENTS:

STEEL DETAIL

SCALE:
 DRAWN BY: TPC 01/31/2018
 REVISED BY:
 CHECKED BY: ** **

DRAWING NO.
B-017B