

PRODUCT NAME:
HOLDING TANK

DESCRIPTION:
WITH THREE MANHOLES
6250 THRU 7500 GALLONS

DESIGN SPECIFICATIONS

DESIGN LOAD: PEDESTRIAN
(300 PSF)

WITH DRY SOIL CONDITIONS
(WATER LEVEL BELOW TANK).
SUITABLE SUB-BASE BEDDED
WITH GRANULAR MATERIAL
SHALL BE PREPARED TO
HANDLE ANTICIPATED LOADS.
FOR COMPLETE DESIGN AND
PRODUCT INFORMATION,
PLEASE CONTACT PRO-CAST
PRODUCTS.

PRO-CAST PRODUCTS
RESERVES THE RIGHT TO
MAKE CHANGES TO
PRODUCT DESIGN AND/OR
DIMENSIONS WITHOUT
NOTICE. PLEASE CONTACT
PRO-CAST PRODUCTS
WHENEVER NECESSARY
FOR CONFIRMATION OR
ADVICE ON PRODUCT
DESIGN.

NOTES:

1. REFER TO SPECIFICATION SHEET NO. S-101
2. REFER TO SPECIFICATION SHEET NOS. S-251 & S-252
3. REFER TO SPECIFICATION SHEET NO. S-201
4. REFER TO SPECIFICATION SHEET NO. S-250

SCALE: 3/16" = 1'-0"

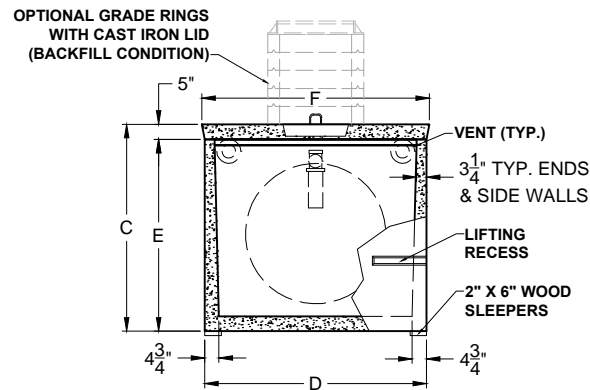
DRAWN BY: TPC 9/14/2017

REVISED BY:

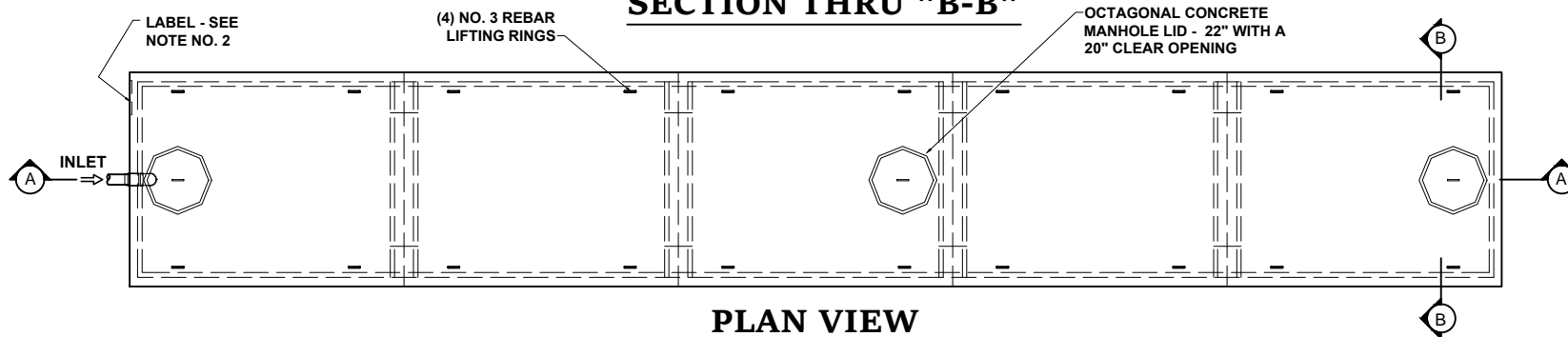
CHECKED BY:

DRAWING NO.

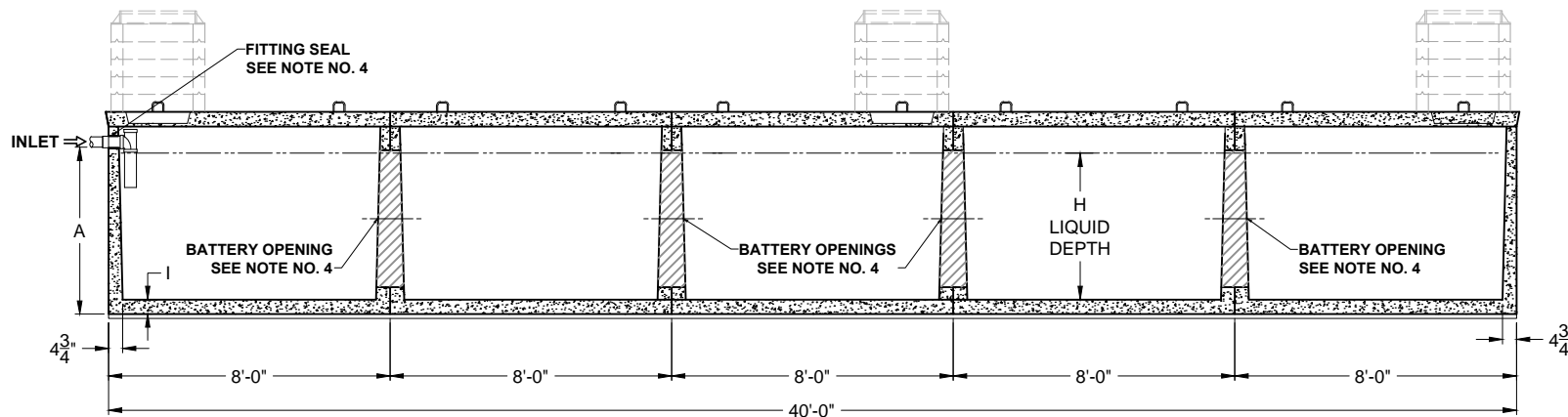
H-005



SECTION THRU "B-B"



PLAN VIEW



SECTION THRU "A-A"

ALL DIMENSIONS ARE IN INCHES & WEIGHTS IN LBS - (RISER WT. NOT INCLUDED)

MODEL	A	B	C	D	E	F	G	H	I	WEIGHT
H-LD-5-6250	57	N/A	69	74	64	75	N/A	50 1/2	4 1/2	71,875
H-LD-5-7500	60 1/2	N/A	72 1/2	85	67 1/2	86	N/A	53 1/2	5	84,975

EXCAVATION SPECIFICATIONS

MODEL	G-6250	G-7500		
LENGTH	43'-0"	43'-0"		
WIDTH	9'-2"	10'-1"		
BELOW INLET	4'-9"	5'-0 1/2"		
TANK HEIGHT	5'-9"	6'-0 1/2"		