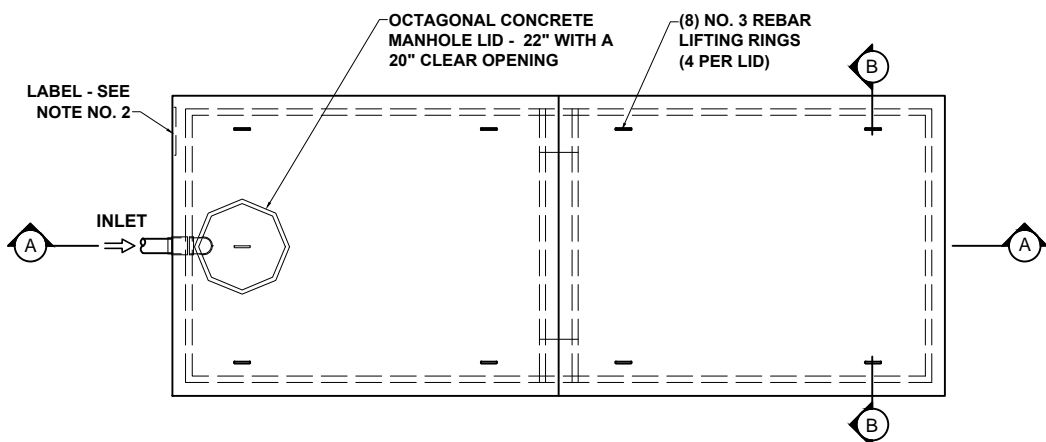
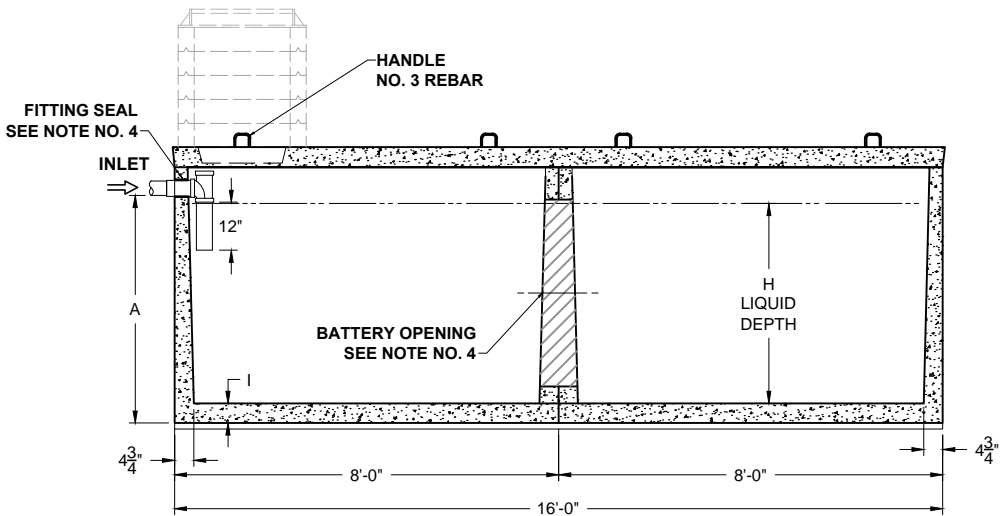


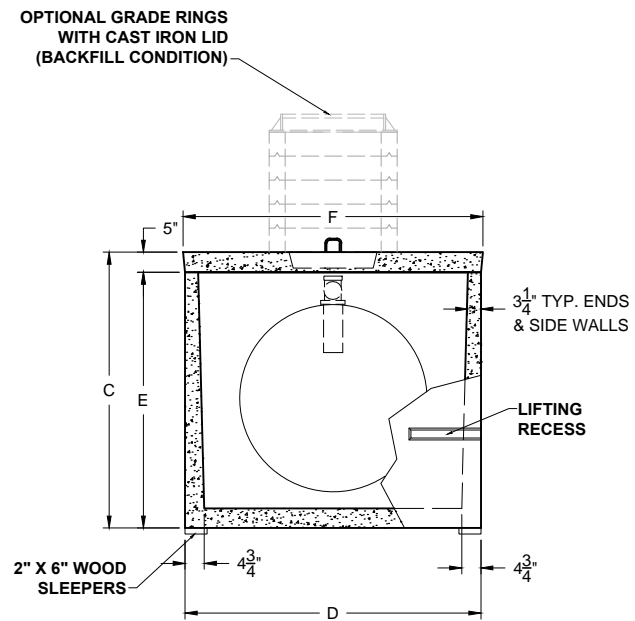
PO Box 602, Highland, CA 92346
 909-793-7602 phone 909-793-1283 fax
 www.procastproducts.com



PLAN VIEW



SECTION THRU "A-A"



SECTION THRU "B-B"

ALL DIMENSIONS ARE IN INCHES & WEIGHTS IN LBS - (RISER WT. NOT INCLUDED)

MODEL	A	B	C	D	E	F	G	H	I	WEIGHT
H-LD-2-2000	48	N/A	54 1/2	74	49 1/2	75	N/A	41 1/2	5 1/2	26,320
H-LD-2-2500	57	N/A	63 1/2	74	58 1/2	75	N/A	50 1/2	5 1/2	28,750
H-LD-2-3000	60 1/2	N/A	72 1/2	85	67 1/2	86	N/A	53 1/2	6	33,990

EXCAVATION SPECIFICATIONS

MODEL	H-2000	H-2500	H-3000
LENGTH	19'-0"	19'-0"	19'-0"
WIDTH	9'-2"	9'-2"	10'-1"
BELOW INLET	4'-0"	4'-9"	5'-0 1/2"
TANK HEIGHT	4'-6 1/2"	5'-3 1/2"	6'-0 1/2"

PRODUCT NAME:
HOLDING TANK

DESCRIPTION:
 WITH ONE MANHOLE
 2000 THRU 3000 GALLONS

DESIGN SPECIFICATIONS

DESIGN LOAD: PEDESTRIAN
 (300 PSF)

WITH DRY SOIL CONDITIONS (WATER LEVEL BELOW TANK). SUITABLE SUB-BASE BEDDED WITH GRANULAR MATERIAL SHALL BE PREPARED TO HANDLE ANTICIPATED LOADS. FOR COMPLETE DESIGN AND PRODUCT INFORMATION, PLEASE CONTACT PRO-CAST PRODUCTS.

PRO-CAST PRODUCTS RESERVES THE RIGHT TO MAKE CHANGES TO PRODUCT DESIGN AND/OR DIMENSIONS WITHOUT NOTICE. PLEASE CONTACT PRO-CAST PRODUCTS WHENEVER NECESSARY FOR CONFIRMATION OR ADVICE ON PRODUCT DESIGN.

- NOTES:**
1. REFER TO SPECIFICATION SHEET NO. S-101
 2. REFER TO SPECIFICATION SHEET NOS. S-251 & S-252
 3. REFER TO SPECIFICATION SHEET NO. S-201
 4. REFER TO SPECIFICATION SHEET NO. S-250

SCALE: 1/4" = 1'-0"
DRAWN BY: TPC 9/14/2017
REVISED BY:
CHECKED BY:

DRAWING NO.
H-002