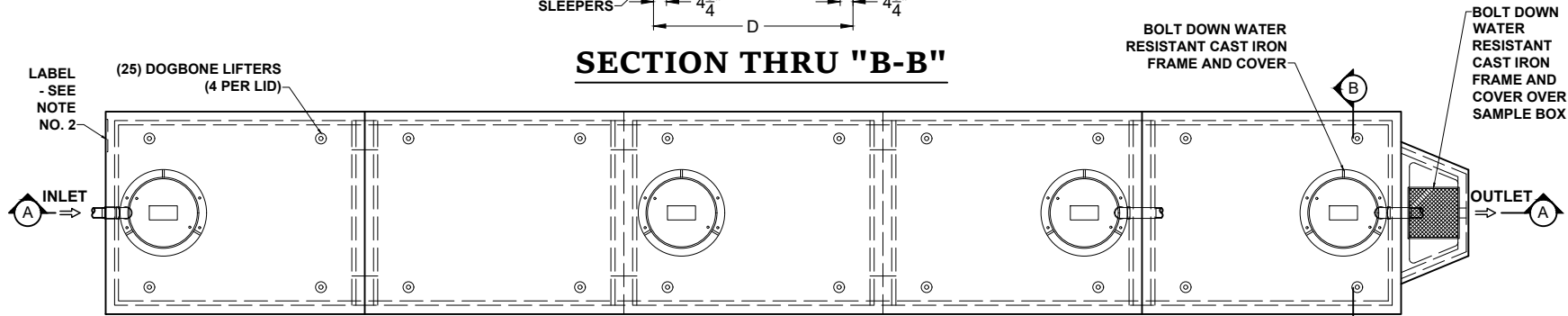
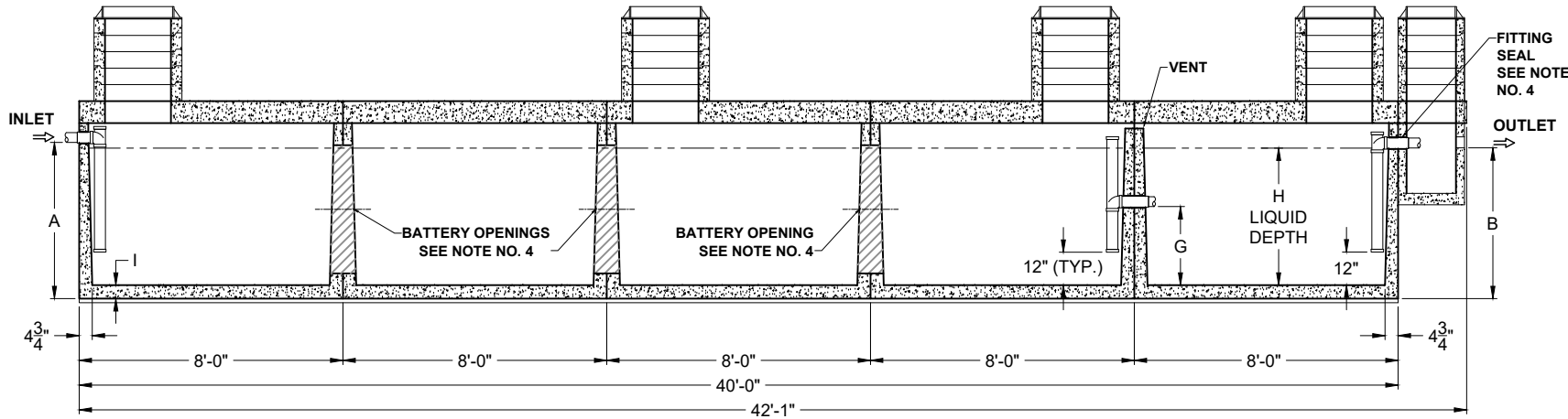


SECTION THRU "B-B"



PLAN VIEW



SECTION THRU "A-A"

PRODUCT NAME:
GREASE INTERCEPTOR

DESCRIPTION:
6250 THRU 7500 GALLONS
WITH THREE MANHOLES & RISERS

DESIGN SPECIFICATIONS

DESIGN LOAD: H-20 LOADING

WITH DRY SOIL CONDITIONS (WATER LEVEL BELOW TANK). SUITABLE SUB-BASE BEDDED WITH GRANULAR MATERIAL SHALL BE PREPARED TO HANDLE ANTICIPATED LOADS. FOR COMPLETE DESIGN AND PRODUCT INFORMATION, PLEASE CONTACT PRO-CAST PRODUCTS.

PRO-CAST PRODUCTS RESERVES THE RIGHT TO MAKE CHANGES TO PRODUCT DESIGN AND/OR DIMENSIONS WITHOUT NOTICE. PLEASE CONTACT PRO-CAST PRODUCTS WHENEVER NECESSARY FOR CONFIRMATION OR ADVICE ON PRODUCT DESIGN.

- NOTES:**
1. REFER TO SPECIFICATION SHEET NO. S-101
 2. REFER TO SPECIFICATION SHEET NOS. S-251 & S-252
 3. REFER TO SPECIFICATION SHEET NO. S-201
 4. REFER TO SPECIFICATION SHEET NO. S-250

SCALE: 3/16" = 1'-0"

DRAWN BY: TPC 09/14/2017

REVISED BY: JPL 05/03/2023

CHECKED BY:

DRAWING NO.

G-006

ALL DIMENSIONS ARE IN INCHES & WEIGHTS IN LBS - (RISER WT. NOT INCLUDED)										EXCAVATION SPECIFICATIONS				
MODEL	A	B	C	D	E	F	G	H	I	WEIGHT	LENGTH	WIDTH	BELOW INLET	TANK HEIGHT
G-HD-5-6250	57	55	72	74	64	74	29 3/4	50 1/2	4 1/2	78,625	45'-0"	9'-2"	4'-9"	6'-0"
G-HD-5-7500	60 1/2	58 1/2	75 1/2	85	67 1/2	85	30 3/4	53 1/2	5	91,725	45'-0"	10'-1"	5'-0 1/2"	6'-3 1/2"