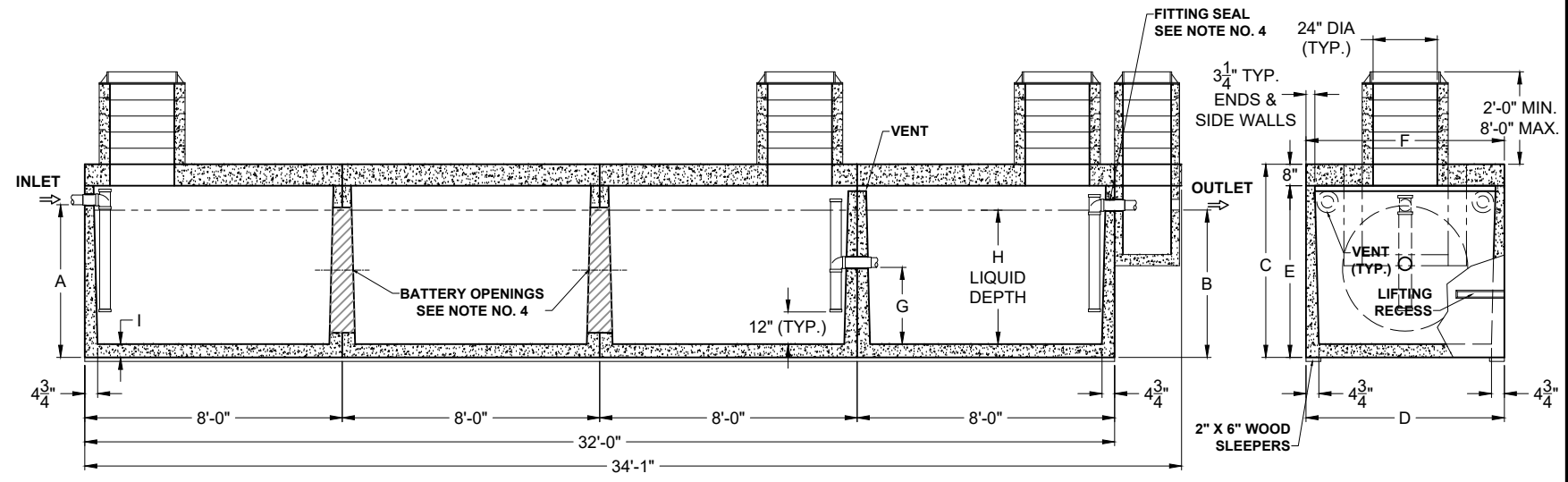


PLAN VIEW



SECTION THRU "A-A"

SECTION THRU "B-B"

PRODUCT NAME:
GREASE INTERCEPTOR

DESCRIPTION:
 4000 THRU 6000 GALLONS
 WITH THREE MANHOLES & RISERS

DESIGN SPECIFICATIONS

DESIGN LOAD: H-20 LOADING
 WITH DRY SOIL CONDITIONS (WATER LEVEL BELOW TANK). SUITABLE SUB-BASE BEDDED WITH GRANULAR MATERIAL SHALL BE PREPARED TO HANDLE ANTICIPATED LOADS. FOR COMPLETE DESIGN AND PRODUCT INFORMATION, PLEASE CONTACT PRO-CAST PRODUCTS.

PRO-CAST PRODUCTS RESERVES THE RIGHT TO MAKE CHANGES TO PRODUCT DESIGN AND/OR DIMENSIONS WITHOUT NOTICE. PLEASE CONTACT PRO-CAST PRODUCTS WHENEVER NECESSARY FOR CONFIRMATION OR ADVICE ON PRODUCT DESIGN.

- NOTES:**
1. REFER TO SPECIFICATION SHEET NO. S-101
 2. REFER TO SPECIFICATION SHEET NOS. S-251 & S-252
 3. REFER TO SPECIFICATION SHEET NO. S-201
 4. REFER TO SPECIFICATION SHEET NO. S-250

ALL DIMENSIONS ARE IN INCHES & WEIGHTS IN LBS - (RISER WT. NOT INCLUDED)										EXCAVATION SPECIFICATIONS				
MODEL	A	B	C	D	E	F	G	H	I	WEIGHT	LENGTH	WIDTH	BELOW INLET	TANK HEIGHT
G-HD-4-4000	50	48	63	74	55	74	24 3/4	41 1/2	4 1/2	58,040	37'-0"	9'-2"	4'-0"	5'-3"
G-HD-4-5000	59	57	72	74	64	74	29 3/4	50 1/2	4 1/2	62,900	37'-0"	9'-2"	4'-9"	6'-0"
G-HD-4-6000	62 1/2	60 1/2	75 1/2	85	67 1/2	85	30 3/4	53 1/2	5	73,380	37'-0"	10'-1"	5'-0 1/2"	6'-3 1/2"

SCALE: 3/16" = 1'-0"
DRAWN BY: TPC/09/14/2017
REVISED BY: JPL 12/14/2023
CHECKED BY:
DRAWING NO.
G-005