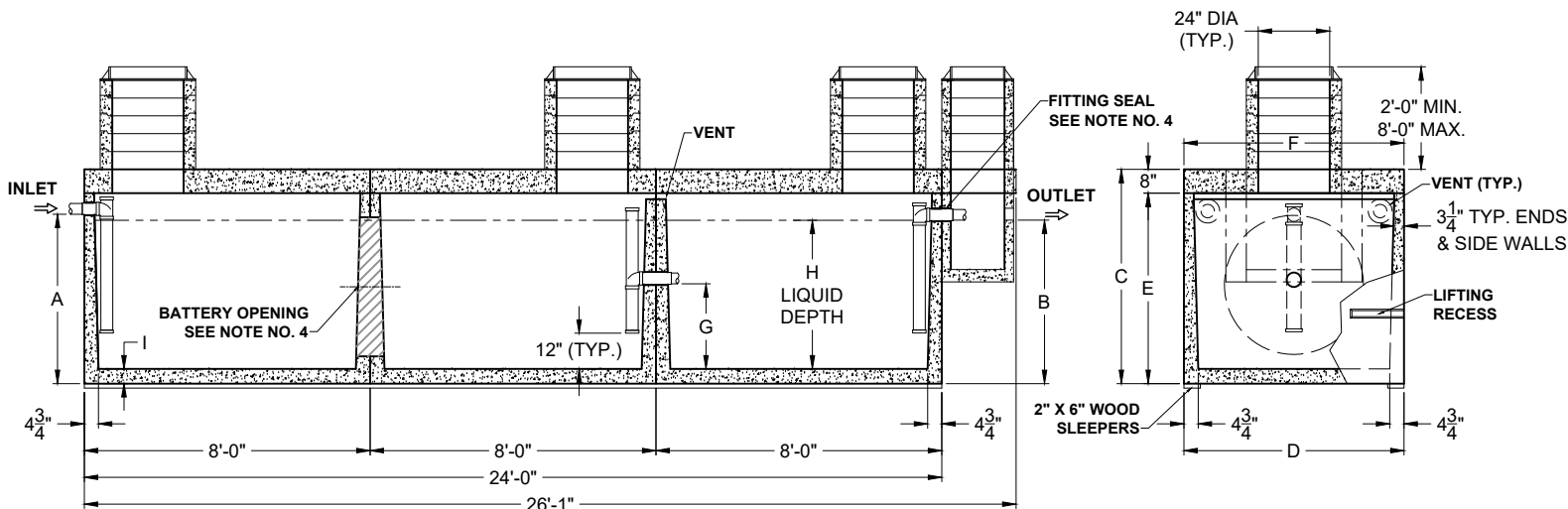


PLAN VIEW



SECTION THRU "A-A"

SECTION THRU "B-B"

PRODUCT NAME:
GREASE INTERCEPTOR

DESCRIPTION:
3750 THRU 4500 GALLONS
WITH THREE MANHOLES & RISERS

DESIGN SPECIFICATIONS

DESIGN LOAD: H-20 LOADING

WITH DRY SOIL CONDITIONS (WATER LEVEL BELOW TANK), SUITABLE SUB-BASE BEDDED WITH GRANULAR MATERIAL SHALL BE PREPARED TO HANDLE ANTICIPATED LOADS. FOR COMPLETE DESIGN AND PRODUCT INFORMATION, PLEASE CONTACT PRO-CAST PRODUCTS.

PRO-CAST PRODUCTS RESERVES THE RIGHT TO MAKE CHANGES TO PRODUCT DESIGN AND/OR DIMENSIONS WITHOUT NOTICE. PLEASE CONTACT PRO-CAST PRODUCTS WHENEVER NECESSARY FOR CONFIRMATION OR ADVICE ON PRODUCT DESIGN.

NOTES:

1. REFER TO SPECIFICATION SHEET NO. S-101
2. REFER TO SPECIFICATION SHEET NOS. S-251 & S-252
3. REFER TO SPECIFICATION SHEET NO. S-201
4. REFER TO SPECIFICATION SHEET NO. S-250

SCALE: 3/16" = 1'-0"

DRAWN BY: TPC 09/14/2017

REVISED BY: JPL 05/03/2023

CHECKED BY:

DRAWING NO.

G-004

ALL DIMENSIONS ARE IN INCHES & WEIGHTS IN LBS - (RISER WT. NOT INCLUDED)										EXCAVATION SPECIFICATIONS				
MODEL	A	B	C	D	E	F	G	H	I	WEIGHT	LENGTH	WIDTH	BELOW INLET	TANK HEIGHT
G-HD-3-3750	57	55	72	74	64	74	25 3/4	50 1/2	4 1/2	47,175	29'-0"	9'-2"	4'-9"	6'-0"
G-HD-3-4500	60 1/2	58 1/2	75 1/2	85	67 1/2	85	26 3/4	53 1/2	5	55,035	29'-0"	10'-1"	5'-0 1/2"	6'-3 1/2"