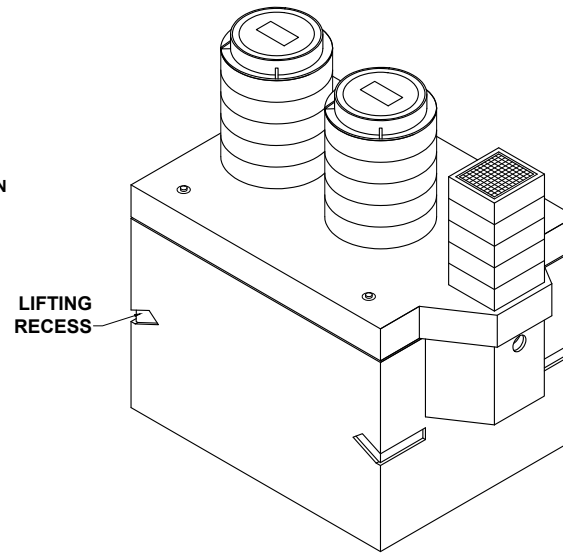
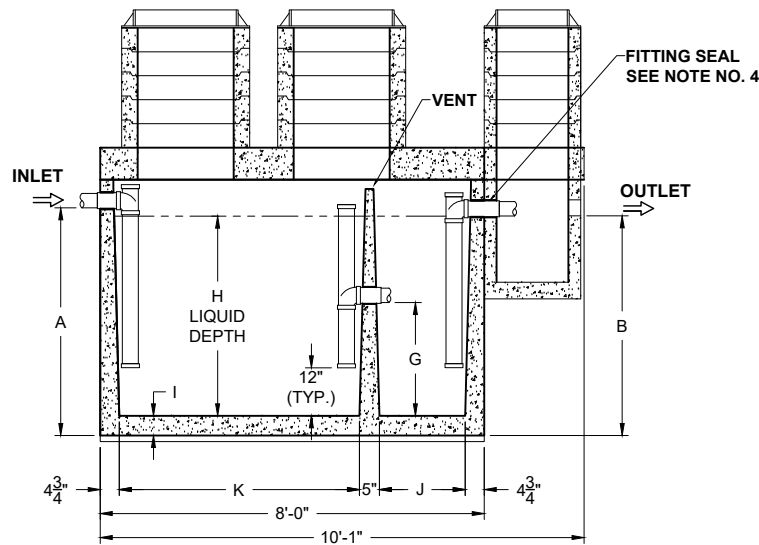


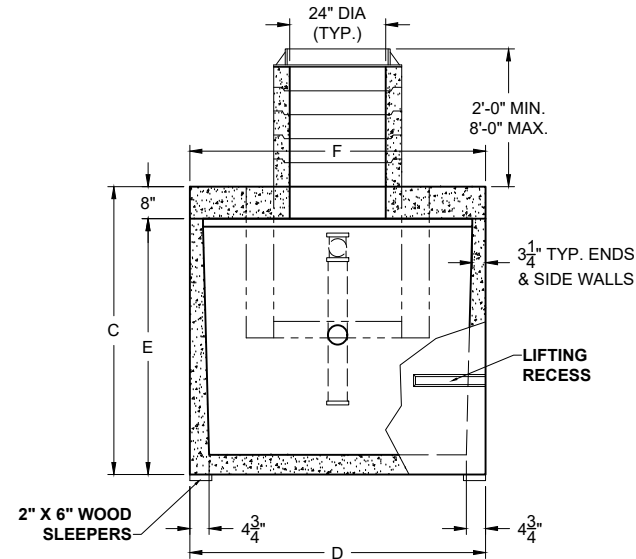
**PLAN VIEW**



**ISOMETRIC VIEW**



**SECTION THRU "A-A"**



**SECTION THRU "B-B"**

ALL DIMENSIONS ARE IN INCHES & WEIGHTS IN LBS - (RISER WT. NOT INCLUDED)										EXCAVATION SPECIFICATIONS				
MODEL	A	B	C	D	E	F	G	H	I	WEIGHT	LENGTH	WIDTH	BELOW INLET	TANK HEIGHT
PCG-500 / G-HD-1-500	46	44	61	54	51	54	14 3/4	39	4 1/2	11,415	11'-0"	7'-6"	3'-10"	5'-1"

**Pro-Cast**  
PRODUCTS INC.  
27417 E. Third St., Highland, CA 92346  
909-793-7602 phone 909-793-1283 fax  
www.procastproducts.com

PRODUCT NAME:  
**GREASE INTERCEPTOR**

DESCRIPTION:  
500 GALLONS  
WITH TWO MANHOLES & RISERS

DESIGN SPECIFICATIONS

DESIGN LOAD: H-20 LOADING

WITH DRY SOIL CONDITIONS (WATER LEVEL BELOW TANK), SUITABLE SUB-BASE BEDDED WITH GRANULAR MATERIAL SHALL BE PREPARED TO HANDLE ANTICIPATED LOADS. FOR COMPLETE DESIGN AND PRODUCT INFORMATION, PLEASE CONTACT PRO-CAST PRODUCTS.

PRO-CAST PRODUCTS RESERVES THE RIGHT TO MAKE CHANGES TO PRODUCT DESIGN AND/OR DIMENSIONS WITHOUT NOTICE. PLEASE CONTACT PRO-CAST PRODUCTS WHENEVER NECESSARY FOR CONFIRMATION OR ADVICE ON PRODUCT DESIGN.

NOTES:

- (NOT USED)
- REFER TO SPECIFICATION SHEET NOS. S-251 & S-252
- REFER TO SPECIFICATION SHEET NO. S-201
- REFER TO SPECIFICATION SHEET NO. S-250

SCALE: 1/4" = 1'-0"

DRAWN BY: TPC 09/14/2017

REVISED BY: JPL 05/04/2023

CHECKED BY:

DRAWING NO.  
**G-001**