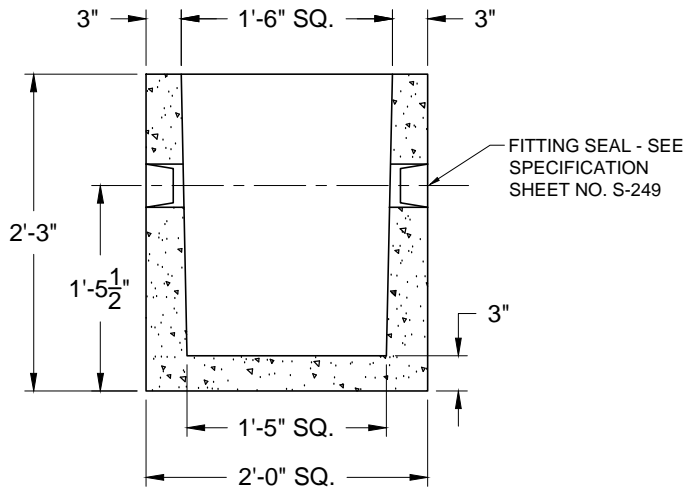
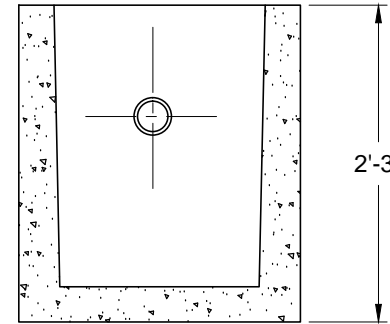


PLAN VIEW



SECTIONAL VIEW



SIDE VIEW

NOTES:

- 1- SAMPLE BOXES MAY BE FITTED WITH VARIOUS COVERS. CHECK WITH FACTORY WHEN PLACING ORDER.
- 2- CONCRETE TYPE II PORTLAND CEMENT ASTM, C-260-86, SIX SACK READY MIX, MINIMUM COMPRESSIVE STRENGTH IS 3,000 PSI AT 28 DAYS.
- 3- NO.3 REINFORCING BAR - ASTM A-615, GRADE 40.
- 4- SECONDARY REINFORCING: COLLATED FIBERLLATED POLYPROPYLENE FIBER.

27417 E. Third St., Highland, CA 92346  
 909-793-7602 phone 909-793-1283 fax  
 www.procastproducts.com

**DESCRIPTION:**  
**24" IN-LINE  
 SAMPLE BOX**

**DESIGN SPECIFICATIONS**  
**DESIGNED FOR  
 H-20 LOADING**

WITH DRY SOIL CONDITIONS (WATER LEVEL BELOW TANK). SUITABLE SUB-BASE BEDDED WITH GRANULAR MATERIAL SHALL BE PREPARED TO HANDLE ANTICIPATED LOADS. FOR COMPLETE DESIGN AND PRODUCT INFORMATION, PLEASE CONTACT PRO-CAST PRODUCTS.

PRO-CAST PRODUCTS RESERVES THE RIGHT TO MAKE CHANGES TO PRODUCT DESIGN AND/OR DIMENSIONS WITHOUT NOTICE. PLEASE CONTACT PRO-CAST PRODUCTS WHENEVER NECESSARY FOR CONFIRMATION OR ADVICE ON PRODUCT DESIGN.

NOTES: REF. DWG. #1128

SCALE:	NOT TO SCALE
DRAWN BY:	TPC 12/03/2018
REVISED BY:	
CHECKED BY:	

DRAWING NO.  
**CB2**