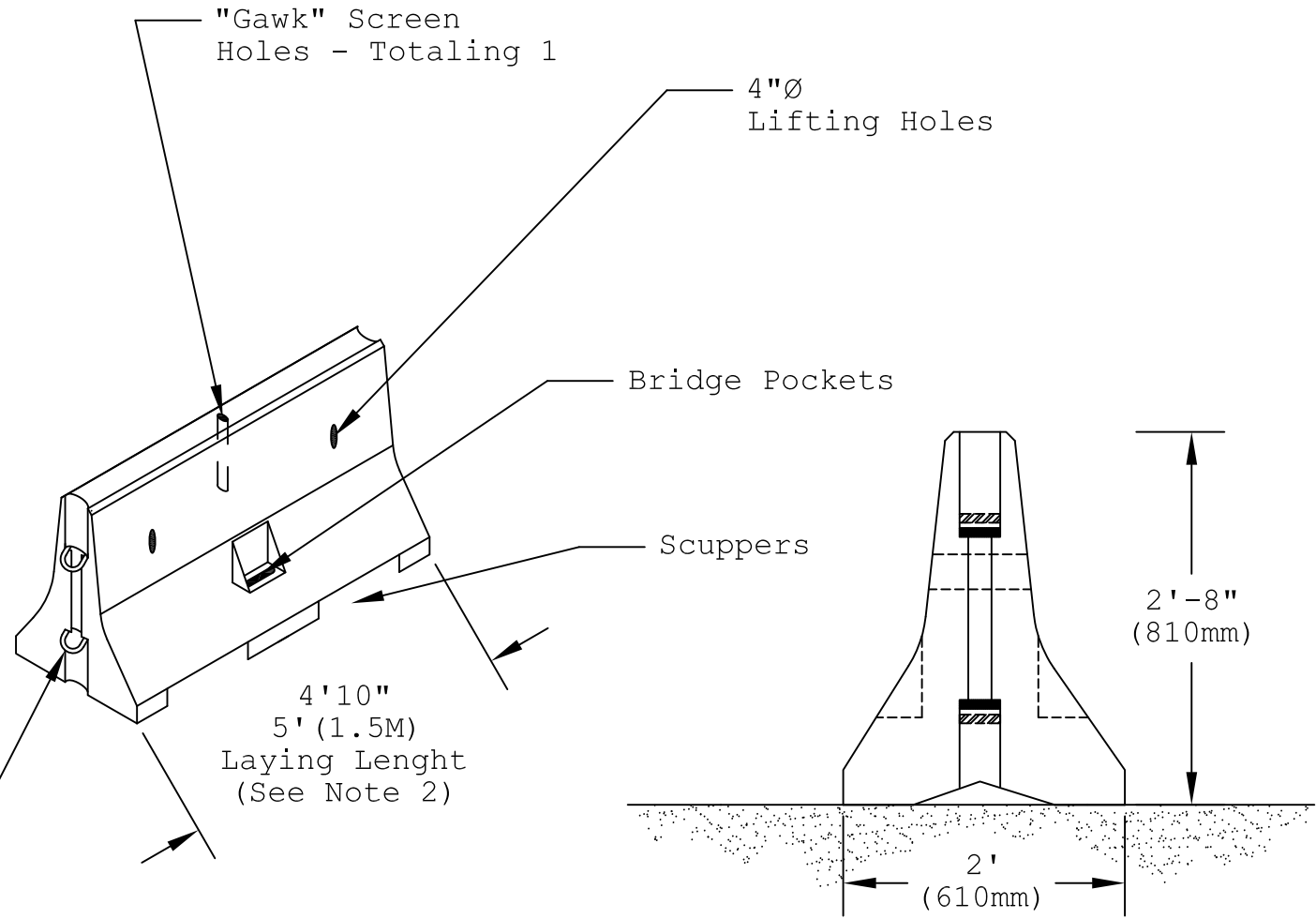


5' (1.5M) Barrier Rail Type K

Notes:

- 1) Weight = Approx. 1,950 lbs per piece
- 2) Laying length from connector pin to connector pin is 5'0"
- 3) "Gawk" Screen holes available in 1 3/4"Ø or 3"Ø and spacing can be modified
(Call for Pricing)



Barrier End Detail

Pro-Cast Products Inc.
P.O. Box 602
27417 E. 3rd St.
Highland, CA 92346
Phone: (909) 793-7602
Fax: (909) 793-1283
www.procastproducts.com

Created:	3/3/11	CWA
Modified:		
Modified:		
Modified:		
Modified:		
Modified:		

Barrier Rail
Type K
5' Laying Length

