

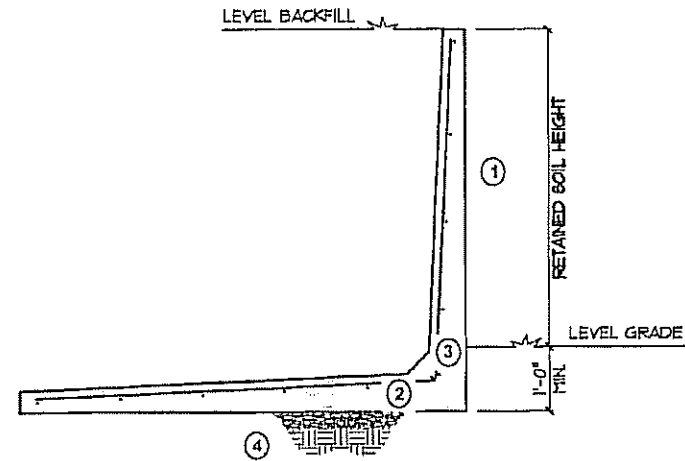
Sloped Backfill

1500 P.S.I. Min. Bearing Pressure

(1) Max Wall Height	(2) Footing Thickness At Wall	(3) Bottom of Wall Thickness	(4) Min. Footing Width
3'	4"	4"	2'-6"
4'	4"	4"	3'-6"
5'	5"	5"	4'-6"
6'	7 1/2"	7 1/2"	5'-6"

1000 P.S.I. Min. Bearing Pressure

(1) Max Wall Height	(2) Footing Thickness At Wall	(3) Bottom of Wall Thickness	(4) Min. Footing Width
3'	4"	4"	3'-6"
4'	4"	4"	4'-6"
5'	5"	5"	6'-0"
6'	7 1/2"	7 1/2"	7'-0"



Level Backfill

1500 P.S.I. Min. Bearing Pressure

(1) Max Wall Height	(2) Footing Thickness At Wall	(3) Bottom of Wall Thickness	(4) Min. Footing Width
3'	4"	4"	2'-0"
4'	4"	4"	2'-6"
5'	5"	5"	3'-6"
6'	7 1/2"	7 1/2"	4'-0"

Note:
4,000 P.S.I. Concrete

This drawing is for reference purposes only.
Complete drawings are available by request
www.ProcastProducts.com



"L" WALLS

Drawn: DWR ID:
Rev. 1 Date: 5/22/08 PAGE 1 OF 1