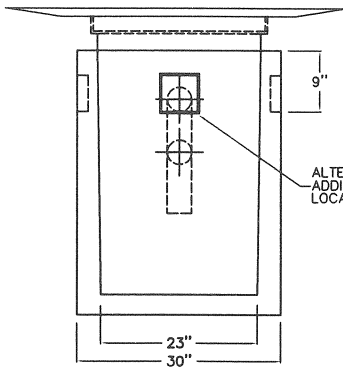
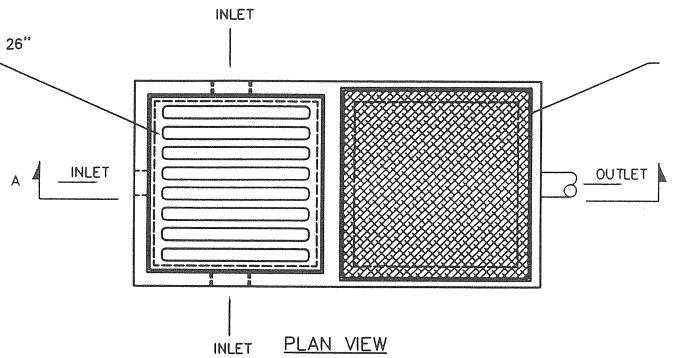
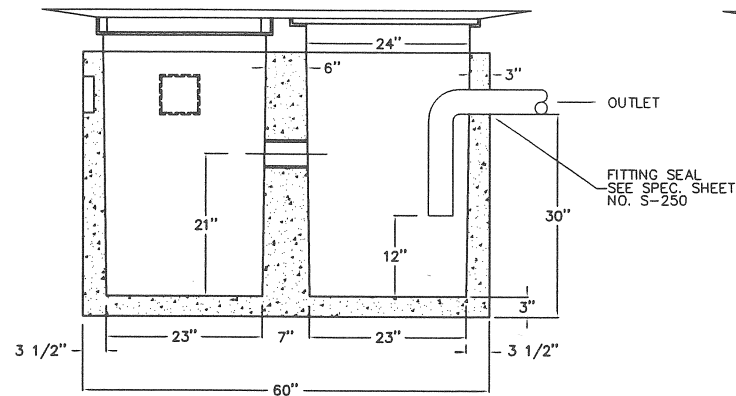


SURFACE INLET GRATE 2012 26" X 26"
WITH FABRICATED STEEL FRAME

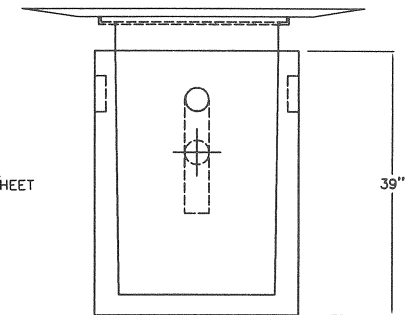
DIAMOND FLOOR PLATE COVER AND
FABRICATED STEEL FRAME
#2 FOR 250 PSF LOADING
#4 FOR H-20 LOADING



INLET
END VIEW



SECTION A - A



OUTLET
END VIEW

NOTES:

1. CONCRETE TYPE II PORTLAND CEMENT ASTM C-260-86, SIX SACK READY MIX. MINIMUM COMPRESSIVE STRENGTH 3,000 PSI AT 28 DAYS.
2. REINFORCING BAR ASTM A 615, GRADE 40 REINFORCING BAR SIZE NO.3.
3. SECONDARY REINFORCING: COLLATED FIBRILLATED POLYPROPYLENE FIBER.
4. BAFFLE WALL OPENING AND OUTLET MINIMUM 4" DIAMETER.
5. LIQUID CAPACITY BELOW OUTLET LEVEL 129 GALLONS.

SAND AND OIL TRAP
DESIGNED FOR EITHER 250 PSF LOADING
OR
H-20 VEHICLE LOADING

Pro-Cast
PRODUCTS INC.

P.O. BOX 602
HIGHLAND, CA 92346
909 793-7602 800 945-8265
Fax: 909 793-1283

DATE:
12-6-99

DRAWN BY:
B. BRAKE

SCALE:
1" = 1'

DWG #
1117