



PO Box 602, Highland, CA 92346  
 909-793-7602 phone 909-793-1283 fax  
 www.procastproducts.com

**PRODUCT NAME:**  
 SAND & GREASE INTERCEPTOR

**DESCRIPTION:**  
 WITH TWO COMPARTMENTS  
 6250 THRU 7500 GALLONS

**DESIGN SPECIFICATIONS**

**DESIGN LOAD: H-20 LOADING**

WITH DRY SOIL CONDITIONS (WATER LEVEL BELOW TANK). SUITABLE SUB-BASE BEDDED WITH GRANULAR MATERIAL SHALL BE PREPARED TO HANDLE ANTICIPATED LOADS. FOR COMPLETE DESIGN AND PRODUCT INFORMATION, PLEASE CONTACT PRO-CAST PRODUCTS.

PRO-CAST PRODUCTS RESERVES THE RIGHT TO MAKE CHANGES TO PRODUCT DESIGN AND/OR DIMENSIONS WITHOUT NOTICE. PLEASE CONTACT PRO-CAST PRODUCTS WHENEVER NECESSARY FOR CONFIRMATION OR ADVICE ON PRODUCT DESIGN.

**NOTES:**

1. REFER TO SPECIFICATION SHEET NO. S-101
2. REFER TO SPECIFICATION SHEET NOS. S-251 & S-252
3. REFER TO SPECIFICATION SHEET NO. S-201
4. REFER TO SPECIFICATION SHEET NO. 250

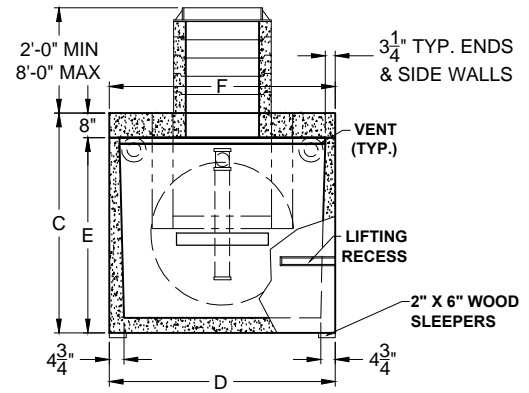
**SCALE:** 3/16" = 1'-0"

**DRAWN BY:** TPC 9/14/2017

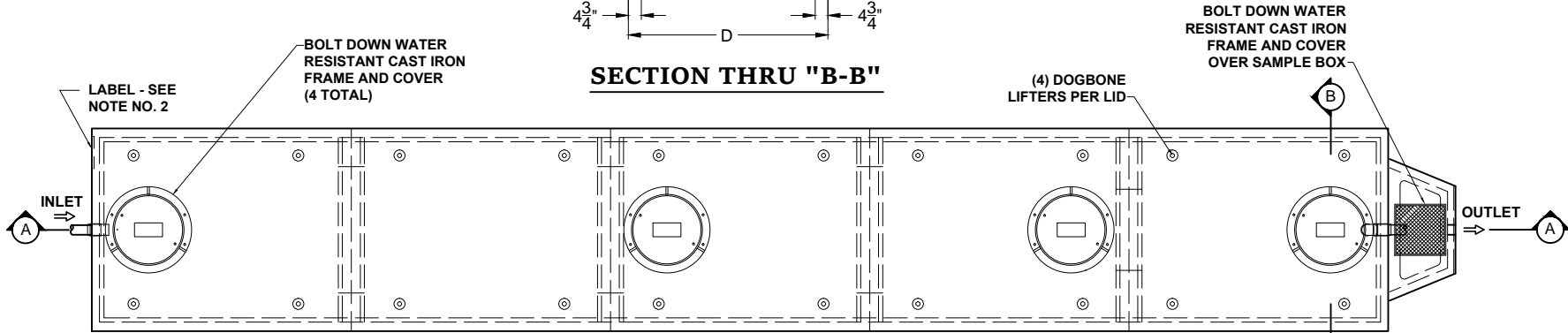
**REVISED BY:**

**CHECKED BY:**

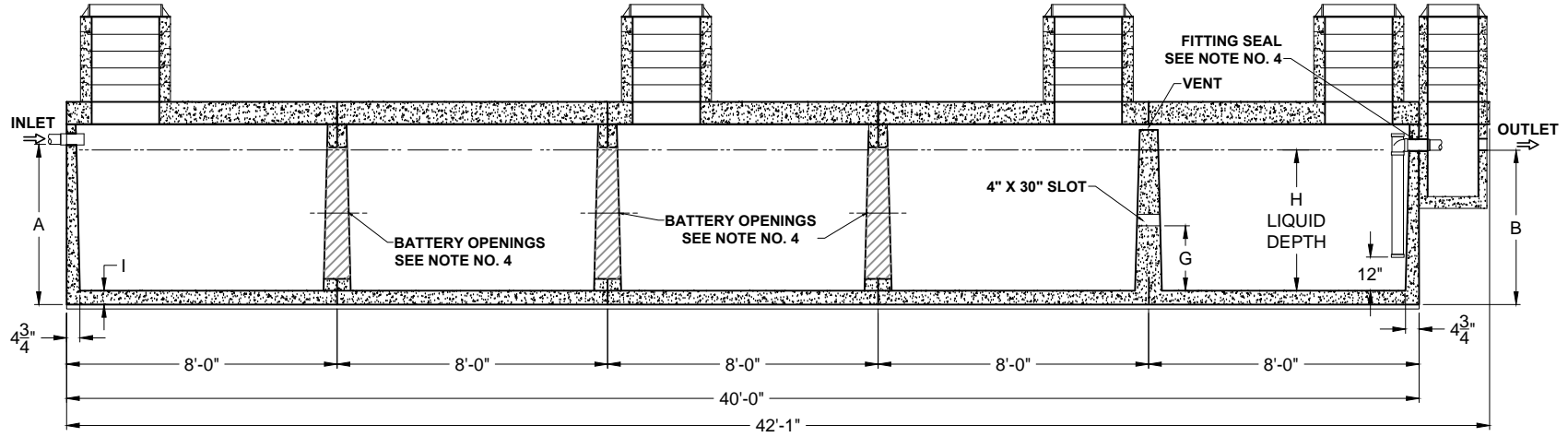
**DRAWING NO.**  
**SG-005**



**SECTION THRU "B-B"**



**PLAN VIEW**



**SECTION THRU "A-A"**

ALL DIMENSIONS ARE IN INCHES & WEIGHTS IN LBS - (RISER WT. NOT INCLUDED)

MODEL	A	B	C	D	E	F	G	H	I	WEIGHT
SG-HD-5-6250	57	55	72	74	64	74	29 3/4	50 1/2	4 1/2	78,625
SG-HD-5-7500	60 1/2	58 1/2	75 1/2	85	67 1/2	85	30 3/4	53 1/2	5	91,725

**EXCAVATION SPECIFICATIONS**

MODEL	SG-6250	SG-7500
LENGTH	45'-0"	45'-0"
WIDTH	9'-2"	10'-1"
BELOW INLET	4'-9"	5'-0 1/2"
TANK HEIGHT	6'-0"	6'-3 1/2"