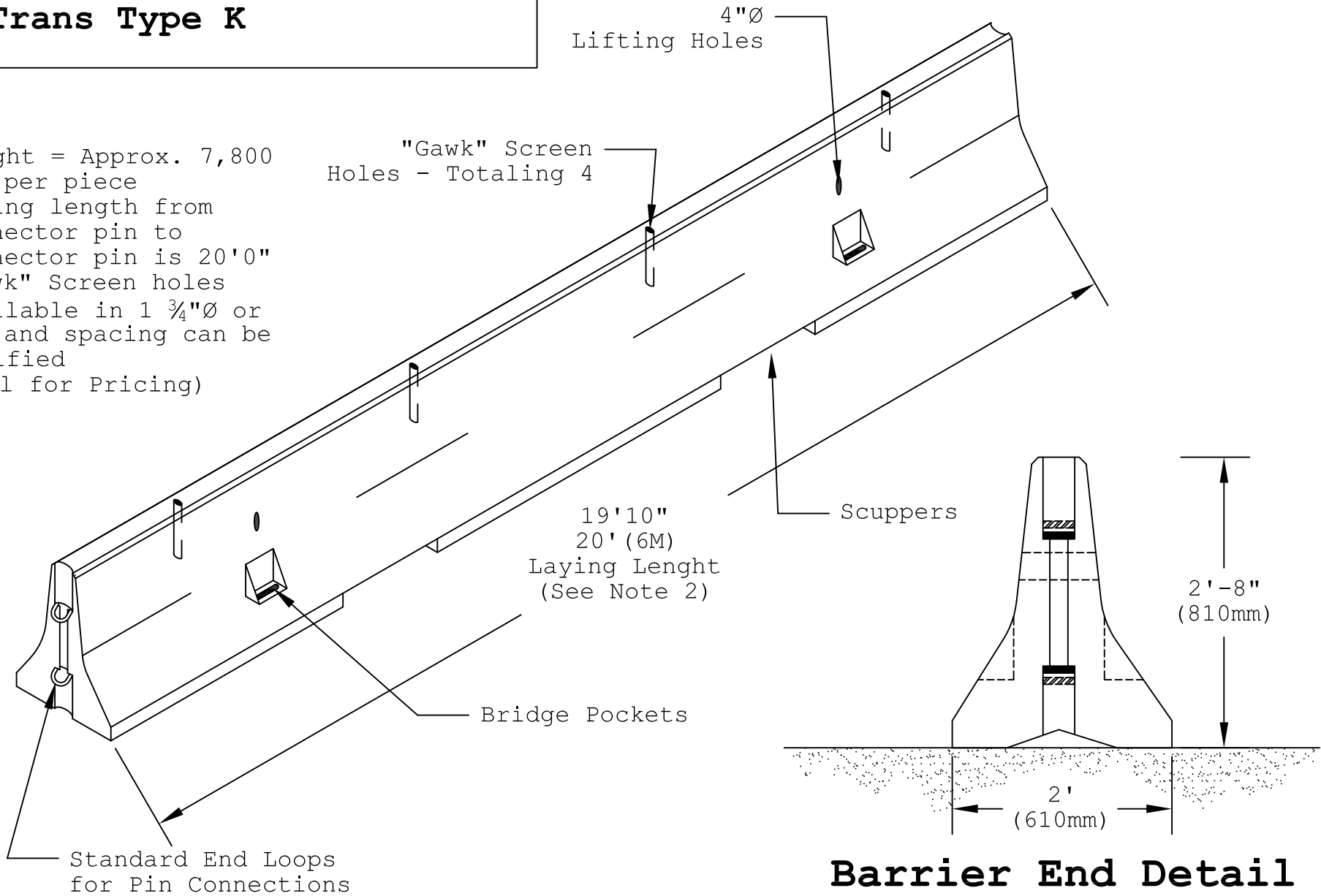


20' (6M) Barrier Rail

Cal Trans Type K

Notes:

- 1) Weight = Approx. 7,800 lbs per piece
- 2) Laying length from connector pin to connector pin is 20'0"
- 3) "Gawk" Screen holes available in 1 3/4"Ø or 3"Ø and spacing can be modified (Call for Pricing)



Barrier End Detail

Pro-Cast Products Inc.
 P.O. Box 602
 27417 E. 3rd St.
 Highland, CA 92346
 Phone: (909) 793-7602
 Fax: (909) 793-1283
 www.procastproducts.com

Created:	3/1/11	CWA
Modified:		
Modified:		
Modified:		
Modified:		
Modified:		

Barrier Rail
 Cal Trans Type K
 20' Laying Length

